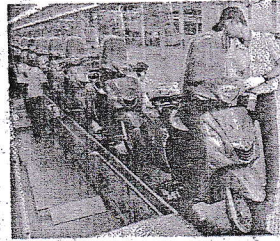


Yamaha to invest ₹180 crore to boost 2-W capacity at TN plant

G Balachandar
Chennai

India Yamaha Motor (IYM) has proposed an expansion of its two-wheeler production capacity at its factory near Chennai.

The Japan-based automotive leader has submitted a pre-feasibility report outlining its expansion plans and seeking environmental clearance. The company intends to invest ₹180 crore in this capacity expansion



phase, which is expected to generate job opportunities for over 400 individuals.

"In response to market demands, India Yamaha Motor aims to expand its existing unit," noted a report.

PRODUCTION CAPACITY

IYM operates state-of-the-art manufacturing facilities at Surajpur in Uttar Pradesh, and Vallam Vadagal near Chennai in Tamil Nadu, producing motorcycles for both domestic and export markets. The company has the capacity to manufacture 1.5

million motorcycles annually. IYM has planned to enhance the capacity of the Vallam Vadagal operations, which covers a 111-acre site that commenced operations in 2015.

The proposed expansion will involve constructing additional facilities to produce 35,000 motorcycles and 45,000 scooters per month. The company has already invested ₹1,789 crore in Vallam Vadagal, and the total investment is expected to rise to ₹1,969 crore with the proposed expansion.

The proposed expansion will also increase the size of the plant from 1.5 lakh square metres to 1.7 lakh square metres.

With a significant rise in demand, the company is looking to enhance its presence in this sector, where it currently holds over 5 per cent market share, it said.