

Steel imports fall 11% to 0.52 mt in April on drop in shipments

SUPPLY STRAIN. First major month of decline post imposition of the safeguard duty

Abhishek Law
New Delhi

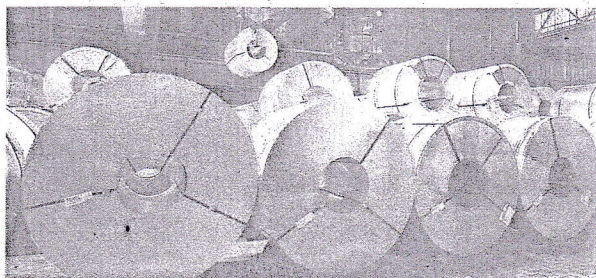
The country's finished steel imports saw a 11 per cent-odd decline in April to 0.52 million tonnes (mt), predominantly led by a fall in shipments from China and Japan and other Asian nations like Vietnam, which have been used for routing shipments of the metal from China.

This was the first major month of yearly decline in imports, following imposition of the safeguard duty, even though the steel trade deficit — difference between exports and imports — stood at nearly ₹2,216 crore, as per a report of the Steel Ministry accessed by *businessline*.

Import in the year-ago period (April 2024) was 0.6 mt.

Finished steel imports for April were valued at ₹5,301 crore (\$620 million), and include non-alloyed offerings, alloyed ones and stainless steel. Flat product shipments, the key item tapped, declined by over 13 per cent to 0.5 mt.

Total steel imports saw a near 4 per cent decline, too, to 0.64 mt, as against 0.7 mt in the year-ago-period.



TRADE CHECK. Steel shipments from China, Japan and other Asian nations fell significantly during the month

For April, India was a net importer of the metal. Exports stood at 0.4 mt, down 26 per cent y-o-y and were valued at ₹3,084 crore (\$361 million).

In terms of price, the Steel Ministry, in its report mentioned that domestic rebar prices moved up month-on-month as both bids and offers strengthened amid improving market sentiment, and hot-rolled coil prices edged higher "amid a wave of bullish sentiment triggered by the government's recent imposition of a safeguard duty on flat steel products".

CHINESE SHIPMENTS

Incidentally, steel shipments from China saw a near 27 per cent decline to 1,02,700 tonnes, as against 1,39,800 tonnes in the year-ago-period.

significant decline over April last year. Import from Indonesia was just 1,100 tonnes, practically insignificant. Incidentally, France and Germany saw some jump in imports — up 905 per cent and 485 per cent y-o-y to 30,300 tonnes and 30,600 tonnes.

EXPORTS OUTLOOK

Traditional European markets of Spain saw a 121 per cent jump in export shipments to 46,900 tonnes while Italy and Belgium saw 60 per cent and 6 per cent decline y-o-y to 50,200 tonnes (126,700 tonnes) and 83,800 tonnes (89,200 tonnes) respectively.

Nepal and the UAE saw an increase too — of 110 per cent to 47,800 tonnes and 3.6 per cent to 27,700 tonnes.

In value terms, shipments declined by nearly 42 per cent to \$109 million from \$187.3 million in the same month last fiscal.

Imports from Japan also witnessed a sharp decline. Steel volume dropped to 85,600 tonnes, down 60 per cent from 2,13,500 tonnes in April last year. In value terms, alloy shipments fell by nearly 30 per cent y-o-y to \$117.5 million in April 2025 as against \$167.2 million in the year-ago-period.

Korea was India's top supplier with 1,54,000 tonnes of the metal coming in (1,50,400 tonnes), up 2 per cent-odd y-o-y, and valued at \$135 million (\$126.5 million), up 6.7 per cent y-o-y.

There was just 13,000 tonnes of import from Vietnam (primarily in the stainless steel category), a signi-