

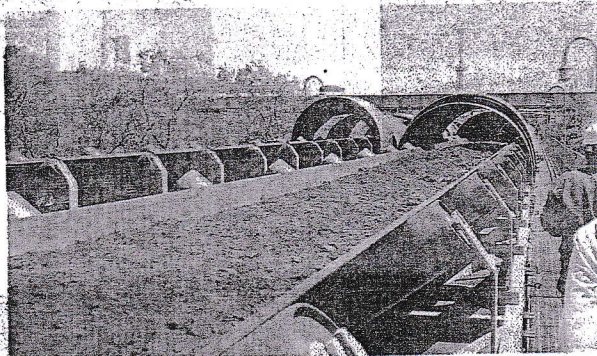
# India to ramp up coking coal production by 20% to 80 million tonnes in FY25

Abhishek Law  
New Delhi

India is targeting a coking coal production of 80 million tonnes (mt) in FY25, a 20 per cent increase over last year's 66.55 mt, as it aims to reduce its import bill in this segment.

The increase in mineral production — a key feedstock in steel-making — will be supplemented by bringing on-stream washeries by Coal India Ltd. This includes commissioning two coking coal washeries and monetising four more, while steel-mills such as Tata, JSW and SAIL will be looking at brown-field and greenfield expansions.

India, the world's second-largest crude steel maker, is already the largest importer of coking



**HELPING HAND.** The increase in coking coal production will be supplemented by bringing on-stream washeries by Coal India

coal, with over 58 mt shipments coming in.

According to a document shared by the Coal Ministry with the Steel Ministry, a policy for offering coking coal or PCI through washeries is also under consideration. (*businessline* has a copy of the document)

At present, the washing capacity of domestic cok-

ing coal is to the tune of 23 million tonne per annum (mtpa), which includes 9.26-2 mtpa by SAIL and 7.6 mtpa by Tata Steel.

"Further engagement with the private sector is required to enhance the availability of coking coal" the document reviewed by *businessline* noted.

In a written reply to Ra-

jya Sabha, Union Coal Minister G Kishan Reddy recently said that the current domestic blending of coking coal by the steel sector is set to be "increased from present 10-12 per cent to 30-35 per cent."

"The available domestic coking coal resources have high ash content which require washing and blending with low ash coking coal for its use in steel-making. Steel CPSEs have been procuring coking coal from a diversified group of countries mainly Australia, United States, Indonesia, Mozambique, Russia etc," the Minister said.

The Steel Ministry documents state that washery capacities will be ramped up by Coal India. CIL has plans to set up 11 washeries with 33 mtpa capacity, of which 15 mtpa is for supply to the steel sector.