

DP World wins bid to develop mega container terminal at Tuna-Tekra in Kutch

Our Bureau
Ahmedabad

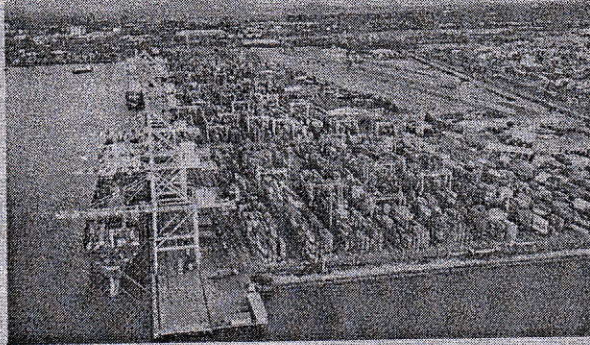
The long-awaited mega container terminal at Tuna Tekra, a satellite facility under Deendayal Port Authority, will take shape after Hindustan Ports Pvt Ltd, the Indian arm of DP World, won the concession contract to develop, operate, and maintain the mega container terminal at Deendayal Port.

In the competitive bidding process held last week, DP World was chosen over its competition, Adani Ports and SEZ Ltd.

DP World already operates five marine terminals with a combined capacity of around 6 million TEUs.

HANDLING CAPACITY

The addition of Tuna Tekra Container Terminal will take



BIGGER PLAY. The new terminal will take DP World's container handling capacity to 8.19 million TEUs. REPRESENTATIVE IMAGE

DP World's combined handling capacity in India to 8.19 million TEUs.

The project involves the construction of a mega-container terminal at Tuna-Tekra through a public-private partnership (PPP).

The terminal will include a 1,100-metre berth and be capable of handling vessels carry-

ing more than 18,000 TEUs. Total capacity will be 2.19 million TEUs.

BOT MODEL

The contract was awarded by the Deendayal Port Authority under the build-operate-transfer (BOT) model, a statement said.

Sultan Ahmed Bin Sulayem,

Group Chairman and CEO of DP World, said, "With the development of Tuna Tekra mega-container terminal in Gujarat, DP World will be well placed to capture these opportunities, further connecting India with global trade and driving value for all our stakeholders."

Rizwan Soomar, CEO and MD, India Subcontinent and sub-Saharan Africa, DP World, said, "We are confident that our deep expertise in developing critical infrastructure under public-private partnerships will drive value for all stakeholders involved in this project. We continue to play an important role in developing world-leading assets to enable trade flow in key markets such as India."

The new terminal will be constructed and equipped with the modern facilities and equipment over an area of approximately 63 hectares.