

Global steel output down 2.2% in the first half of 2025

Sneha Joseph
Chennai

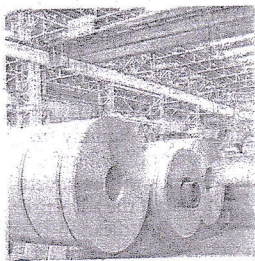
Global steel production recorded a dip of 2.2 per cent at 934.3 million tonnes (mt) in the first half of the current year, with a 3 per cent drop in Chinese output mainly responsible for the fall.

During the January-June period, only India showed a major uptrend in the production at 80.9 mt, up 9.2 per cent.

According to a release by the World Steel Association, China, the top producer, recorded output of 514.8 mt.

Meanwhile, Japan's steel production nosedived by 5 per cent at 40.6 mt while the US recorded a growth of 0.8 per cent at 40.2 mt in the same period.

Russia and other CIS nations' production reached 34.8 mt, down 5.4 per cent. South Korea recorded a dip of 2.8 per cent in its output at 30.6 mt and for Germany, it



was 17.1 mt, down 11.6 per cent.

JUNE OUTPUT

In June alone, global steel production was down 5.8 per cent at 151.4 mt against 161.4 mt in June 2024.

China led the chart by 83.2 mt, down 9.2 per cent, whereas India produced 13.6 mt of steel, an increase of 13.3 per cent. The US recorded growth of 4.6 per cent at 6.9 mt but Russia's output dipped 7.4 per cent at 5.6 mt.

REGION DATA

Region wise, Africa saw its output grow by 3 per cent at

In June 2025, global steel production was down 5.8%

at 151.4 mt against 161.4 mt in June 2024. India produced 13.6 mt of steel, an increase of 13.3 per cent

1.7 mt in June. Asia and Oceania's steel production went north by 6.2 per cent, while the EU also suffered a dip of 8.2 per cent at 10.4 mt. West Asia's production was at 4.3 mt, a decrease of 4.9 per cent.

North America's steel output reached 8.7 mt, up 1.2 per cent. Russia & other CIS nations produced 6.7 mt, down 8.8 per cent while South America saw growth of 1.3 per cent at 3.5 mt. In May, global steel production was down 1.3 per cent.